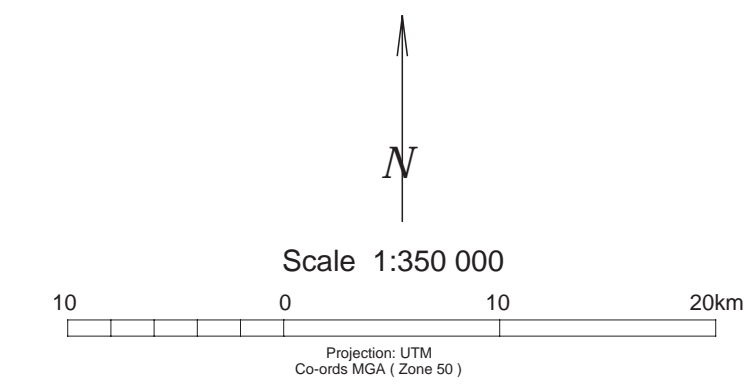


INDICATIVE 2012 Harvest Plan South West Region

The map depicts the gross area within which native forest harvest planning is proposed.



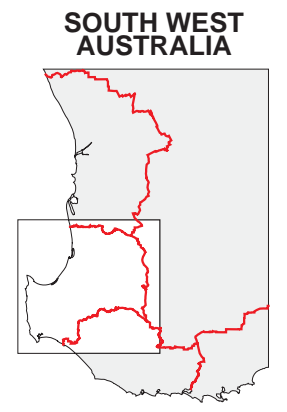
Legend

- New 2012 areas (Jarrah or Wandoo dominant)
- New 2012 areas (Karri dominant).
- Areas continuing from 2011 or earlier plans (Jarrah or Wandoo dominant).
- Areas within which operations associated with mining clearing may occur.
- State forest and timber reserves
- SHOTTS
Hardwood forest block boundary
- Regional boundary
- 03
Compartment number
- Town
- 500 hectares (area guide)

Notes :

1. Gross coupe boundaries only are depicted. Within these boundaries detailed planning would exclude from harvest a network of areas. The actual areas harvested to a range of silvicultural objectives would therefore be less than the areas shown on this map.
2. Areas depicted as continuing from 2011 or earlier plans are as expected on 1st August 2011.
3. The extent of State forest and timber reserve depicted on this map is as proposed, or progressed in the *Forest Management Plan (2004-2013)*.

LOCALITY MAP

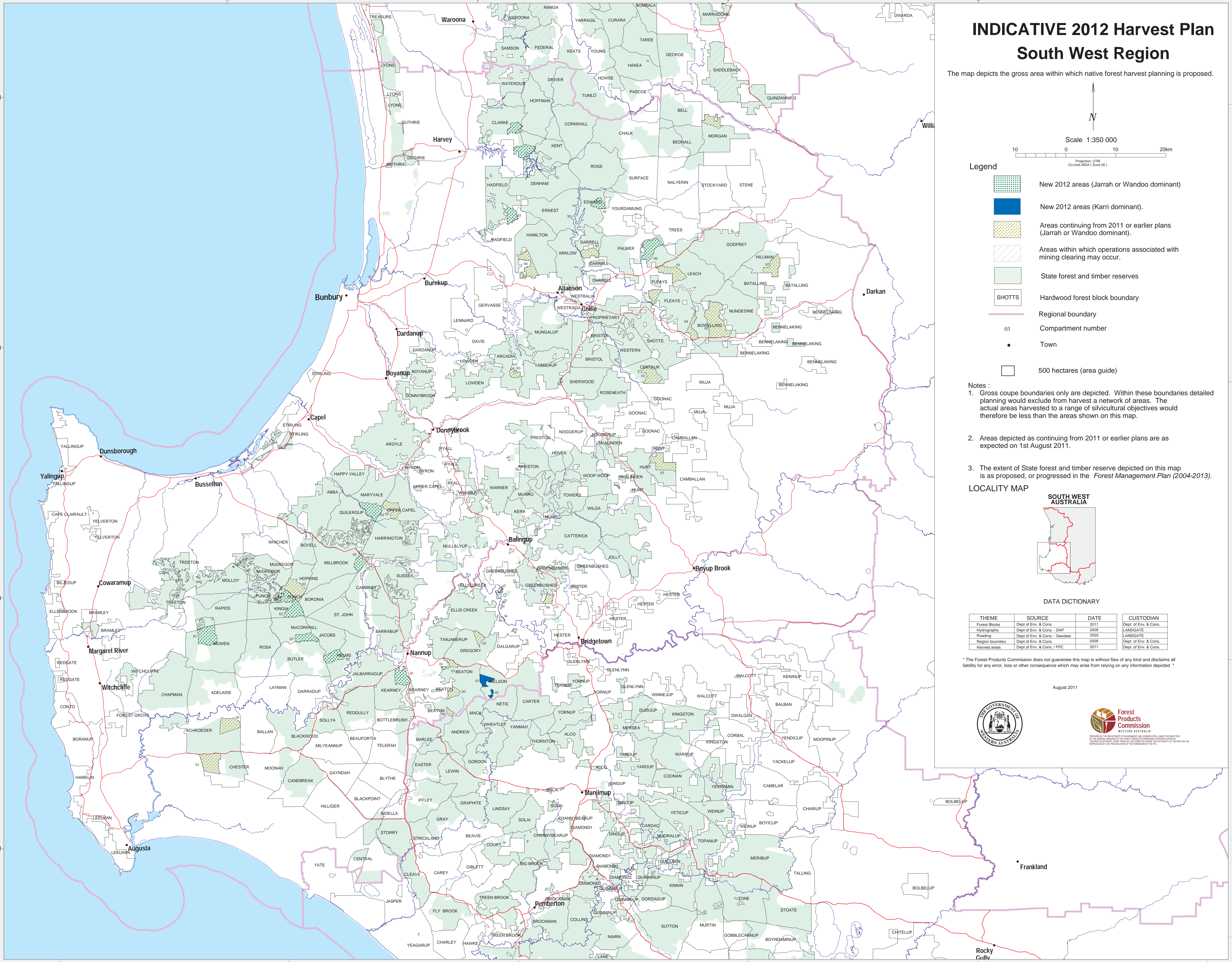


DATA DICTIONARY

THEME	SOURCE	DATE	CUSTODIAN
Forest Blocks	Dept of Env. & Cons.	2011	Dept. of Env. & Cons.
Hydrography	Dept of Env. & Cons. - DAP	2005	LANDGATE
Roading	Dept of Env. & Cons. - Geodata	2003	LANDGATE
Region boundary	Dept of Env. & Cons.	2009	Dept. of Env. & Cons.
Harvest areas	Dept of Env. & Cons. / FPC	2011	Dept. of Env. & Cons.

* The Forest Products Commission does not guarantee this map is without flaw of any kind and disclaims all liability for any error, loss or other consequence which may arise from relying on any information depicted *

August 2011



6,350,000mN

6,300,000mN

6,250,000mN

6,200,000mN

115°30'00.00"

115°30'00.00"

116°30'00.00"

116°30'00.00"

117°00'00.00"

117°30'00.00"

33°00'00.00"

33°30'00.00"

34°00'00.00"

34°30'00.00"