

COMMERCIAL PLANTATIONS

More than 112,000 hectares of plantations and tree crops are managed by the Forest Products Commission, of which 72,000 hectares are plantations on State-owned land.

The traditional plantation species are radiata and maritime pine, bluegum and brown mallet.

Saligna and sandalwood are among the new plantation species being planted.

Part of the Commission's responsibility is to plant, manage and harvest these plantations before marketing their timbers.

Plantations provide a renewable resource that can provide both environmental and economical benefits to the Western Australian community.

The Commission has developed a suite of tree farming options to suit different social, economic and environmental conditions throughout Western Australia.

These options are coordinated through the Commission to support the establishment of a plantation estate and associated industries, and also help to mitigate the impacts of land degradation, particularly salinity.



INNOVATION

The Forest Products Commission has been committed to Tree Breeding since the late 1950s. The objective of optimising wood production, wood quality and disease resistance in all tree species used in tree planting in Western Australia.

The programme has successfully developed new varieties of maritime pine which is 80% more productive than the original trees, as well as being more drought and smaller limbed.

Large breeding populations have been developed for many tree species, allowing for future productivity gains as well as extending the planting range by increasing adaptability to climatic conditions.

Once new varieties are developed, they are handed over to Seed Technologies, another section in the Commission which is focused on meeting the seed requirements of the public – locally, interstate and internationally.

Seed Technologies has over 500 species of seeds available, of which around 20 tree species have been in commercial development for wood-based markets.

The Commission's commercial nursery covers a 226 hectare area in Manjimup and has the capacity to produce some 45 million seedlings and cuttings each year.

The Commission is also a partner in a major research project with the University of Melbourne into Wood Innovations, as well as being involved with the Furniture Design Research Centre based at the University of Western Australia.



CONTACT THE FOREST PRODUCTS COMMISSION

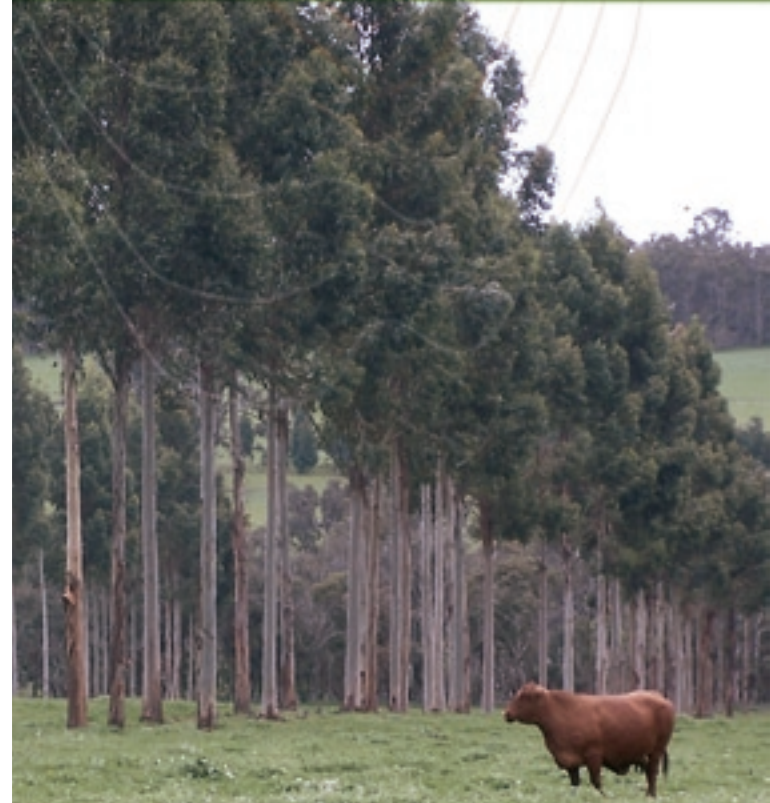
HEAD OFFICE

Level 1
117 Great Eastern
Highway WA 6103
Rivervale
Email: info@fpc.wa.gov.au
Website: www.fpc.wa.gov.au

Phone: (08) 9475 8888
Fax: (08) 9475 8899

BRANCH OFFICES

Albany	120 Albany Hwy Albany WA 6330	Switchboard Fax	9845 5630 9842 5279
Bunbury	Cnr South Western Hwy/Dodson Rd, Bunbury WA 6230	Switchboard Fax	9725 5288 9725 5270
Collie	20 Throssell St Collie WA 6225	Switchboard Fax	9735 1000 9734 5649
Esperance	Lot 617 Harbour Rd Esperance WA 6450	Switchboard Fax	9071 7255 9071 7299
Gnangara	695 Gnangara Rd Lexia WA 6065	Switchboard Fax	9302 7488 9302 7499
Harvey	64 Weir Rd Harvey WA 6220	Switchboard Fax	9729 2888 9729 2499
Infinite Infoline	Freecall hotline		1800 241 688
Kalgoorlie	Suite 6, 158-160 Egan St Kalgoorlie WA 6433	Switchboard Fax	9021 8643 9021 5186
Katanning	10 Dore St Katanning WA 6317	Switchboard Fax	9821 3208 9821 3332
Kununurra	PO Box 2101 Kununurra WA 6743	Switchboard Fax	9166 4034 9166 4065
Mandurah	Lot 31, Pinjarra Rd Mandurah WA 6210	Switchboard Fax	9535 9477 9535 9433
Manjimup	Brain St Manjimup WA 6258	Switchboard Fax	9777 0988 9777 2233
Manjimup West	Plant Propagation Centre Burnside Rd Manjimup WA 6258	Switchboard Fax	9772 0377 9772 1211
Nannup	Warren Rd Nannup WA 6275	Switchboard Fax	9756 3788 9756 1499
Wanneroo	Seed Technology 5 Dundobar Rd Wanneroo WA 6065	Switchboard Fax	9404 5491 9404 5492





WELCOME TO OUR WORLD

The Forest Products Commission was established by the Western Australian Government in 2000 as a State Government Trading Enterprise responsible for managing the State's forest resources in the best possible way to maximise social, environmental and economic outcomes.

The Commission:

- Harvests and sells logs and forest products from State-owned native forests and plantations;
- regenerates (replants) State-owned native and plantation forests;
- manages trees on farms in cooperation with landowners;
- provides advisory and plantation management services to plantation investors;
- identifies new sources of funding to encourage plantations in low to mid-rainfall areas;
- identifies new and better ways to grow and harvest forests, as well as maximising the value of all forest products;
- provides strategic advice to Government regarding forestry in Western Australia; and
- works with industry to find high value uses for Western Australian timbers that create more jobs.

TREE FARMING

The Forest Products Commission offers commercial partnerships with farmers in much of the State to plant trees on their properties, often on land that would otherwise be unproductive.

Under an improved package recently released, farmers are being offered increased upfront payments, annuities and profit-sharing arrangements.

The improved package has been made possible through the State/Commonwealth National Action Plan (NAP) for Salinity and Water Quality which aims to improve land quality by reducing salinity and improving water quality, while bringing economic benefits through the creation of new wood-based industries.

The Commission offers a range of plantation species which are suitable for most soil types, including maritime and radiata pine, a variety of eucalypts and native sandalwood.

The Commission advises farmers on what species to plant and where to plant the trees, carries out the planting, manages the plantation and harvests it when it is mature.

Farmers interested in the scheme, which has already been taken up by scores of landowners around the State, should contact their local FPC office or ring 1800 241 688 for further information.



NATIVE FORESTS

The Western Australian Government's policy of "Protecting our old growth forests" provides for the sustainability of native forests, meaning that the amount of timber harvested does not exceed the growth of the forest.

The Forest Products Commission practises sustainable forest management, ensuring that the forests from which timber is produced are sustained indefinitely and will always be available for future generations to use and enjoy.

The Commission is ensuring that the State's unique native timbers are used for the highest value products possible, with maximum local processing and employment.

Timber from the State's native forests include jarrah, karri, marri, sheoak and arid land species, all of them displaying a range of valuable characteristics, including strength, hardness, excellent appearance and durability.

Today's value-added timber products include veneers and high quality furniture, flooring and decking, joinery and craftwood.



WA'S UNIQUE NATIVE TIMBER

Western Australian forests and woodlands have a wide array of unique tree species that produce a range of timbers.

The hues found in the magnificently diverse range of timbers range from pinkish to earthy red, cream to yellowish-tan to rich chocolate, through to various shades of sunburnt orange.

Jarrah is a premium world-class furniture timber with an attractive grain and strength enabling it to be used in the finest of furniture. Beautiful timbers such as Western Australian sheoak and marri are also used to produce outstanding furniture.

Australian designers and architects have worked together to create exciting new furniture pieces using natural feature-grade Western Australian hardwood.

Exquisite timbers from the arid areas of the State, such as sandalwood, beefwood and gimlet, are used for delicate inlays in quality furniture designs, parquet flooring, intricate wood turnings and other craft items.

Natural stands of sandalwood are harvested mainly in the pastoral regions of the Goldfields, South West and Gascoyne.

The Commission is currently developing sandalwood plantations which will add to this resource in the future.

